

ORWAK HORIZONTAL 25-40 AT

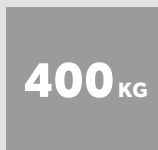
Our fully automated horizontal 25-40 ton balers in this line offer compact dimensions for environments where space is limited. Yet they are designed to meet the challenges by centralized waste handling, where large volumes of recyclable cardboard is produced. We provide well-proven technology for special demands! The automatic tying and the continuous baling enable multi-shift operation.



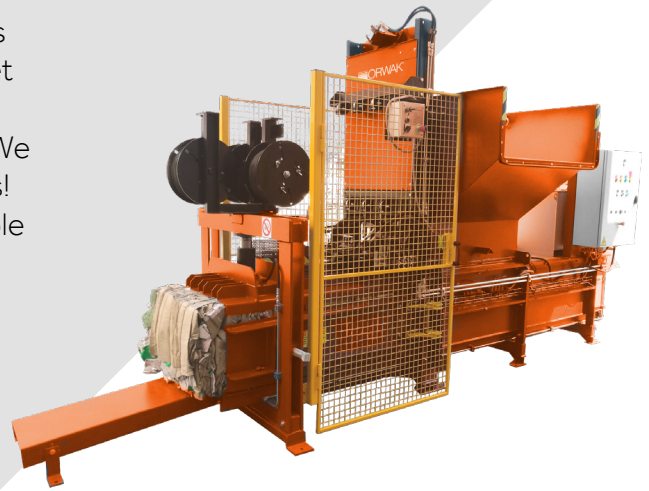
**AUTOMATIC
SOLUTION**



**CAPACITY
CARDBOARD**



**BALE WEIGHT
CARDBOARD**



ORWAK BENEFITS



MORE PRODUCTIVE USE OF TIME

Less time spent on waste handling, more time for your core activities!

MORE SPACE & ORDER

Our balers rapidly minimize the space the waste takes up, keeping aisles free and tidy.

LESS COSTS, MORE VALUE

More compaction = less waste volume to transport. Fewer transports required results in lower transportation costs and reduced CO₂ emissions. Sorting at source yields a higher quality of waste material for recycling.

WHY ORWAK HORIZONTAL?

- Effective large-scale waste handling
- Improved internal and external logistics
- Safe and comfortable working environment
- Excellent control over the throughput
- Increased income when delivering high-quality bales directly to the recycling industry.

ORWAK
PART OF Sulo GROUP

ORWAK HORIZONTAL 25-40 AT

Smart fully automated solution

CONTINUOUS FEEDING AND OUTPUT

A completely automated waste management solution designed for continuous infeed, automatic horizontal or vertical strapping system with adjustable wire links, which enables you to yield optimal output.



Option: conveyor belt



OPTIMAL FEATURES

- Well proven technology
- Auto start (photocell) as standard
- High speed: fast throughput
- Adjustable bale length
- Vertical or horizontal automatic tying

HORIZONTAL 25-40 AT ARE OPTIMIZED FOR:

PAPER

- Paper sacks
- Shredded paper
- Cardboard

PLASTIC

- PET bottles

A VARIETY OF INFEED OPTIONS

To fit the conditions in your environment, our horizontal balers offer a wide choice of infeed systems: manual, by bin, air-transport and conveyor belt.

Our balers can also easily be equipped with shredders, bottle presses, rufflers, strippers and different types of hoppers.

OPTIONS

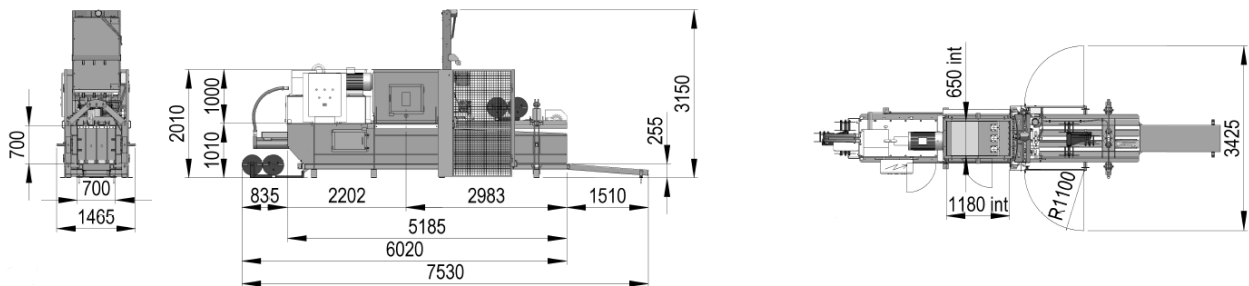
- Horizontal tying
- Bin lifter
- Conveyor belt
- Cooling and heating systems

More special options on demand

DIMENSIONS & SPECIFICATIONS

TECHNICAL SPECIFICATIONS

MODEL	MACHINE DIMENSIONS (LXWXH) EXCL BALE EXIT	FEED OPENING	INFEED CAPACITY	PRESS FORCE	MOTOR	SURFACE PRESSURE	CYCLES PER MINUTE	CHANNEL SECTION	OIL TANK CAPACITY
25 AT	6020x1465x3150 mm	1180x650 mm	0.58 m ³	25 ton	15 kW/20 Hp	5.1 kg/cm ²	4	700x700 mm	300 L
40 AT	6020x1465x3150 mm	1180x650 mm	0.58 m ³	40 ton	22 kW/30 Hp	8.16 kg/cm ²	5	700x700 mm	500 L



TECHNICAL SPECIFICATIONS

MODEL	TOTAL MACHINE WEIGHT	THEORETICAL OUTPUT	LOADING OUTPUT	AUTOMATIC BINDING	BALE SIZE (ADJUSTABLE LENGTH)	BALE WEIGHT CARDBOARD <i>DEPENDS ON BALE LENGTH</i>
25 AT	5200 kg	157 m ³ /h	90 m ³ /h	3 wires Ø 2.7	700x700x800-1400 mm	100-300 kg
40 AT	5300 kg	174 m ³ /h	100 m ³ /h	3 wires Ø 2.7	700x700x800-1400 mm	100-400 kg

We reserve the right to make changes to specifications without prior notice. Bale weights are dependent upon material type.

ORWAK AB

Svetsaregatan 4
S-576 33 Sävsjö
SWEDEN
Tel: +46-(0)382-15700
info@orwak.com

ORWAK.COM

ORWAK
PART OF JULO GROUP