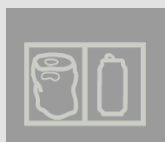


# ORWAK MULTI 5070

The multi-chamber baler provides sorting and compaction of different types of materials in one machine! Top loading is simple and convenient and you can order additional chambers when needed.

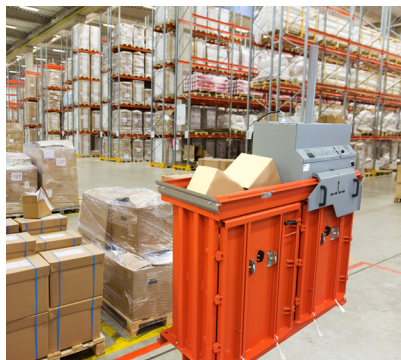


**MULTI-  
CHAMBER**

**110** LBS

**BALE WEIGHT  
CARDBOARD**

## ORWAK BENEFITS



### **MORE PRODUCTIVE USE OF TIME**

Less time spent on waste handling, more time for your core activities!

### **MORE SPACE & ORDER**

Our balers rapidly minimize the space the waste takes up, keeping aisles free and tidy.

### **LESS COSTS, MORE VALUE**

More compaction = less waste volume to transport. Fewer transports required results in lower transportation costs and reduced CO<sub>2</sub> emissions. Sorting at source yields a higher quality of waste material for recycling.

## WHY ORWAK MULTI?

- Sorting and compaction of several waste types at source
- Top-loading of the material in open chambers
- Total freedom to increase capacity by adding additional chambers

**ORWAK**  
PART OF *Sulo* GROUP

# ORWAK MULTI 5070

As easy to maintain as to operate

The 5070 is a multi-chamber solution. It forms a mini recycling point for sorting of different types of material.

### SMALL FOOTPRINT

The compact design and small footprint provide efficient compaction in a small space.

### EFFICIENCY

Whilst the baler compacts the material in one chamber, the other is open and ready to be fed with more material



## ORWAK MULTI 5070 IS OPTIMIZED FOR:

### PAPER

- Paper sacks
- Cardboard
- Shredded paper

### PLASTIC FOIL

- Shrink film
- Plastic bags

### OTHER METALS

- Steel straps

### OTHER PLASTICS

- Plastic straps

### EXTENDABLE SYSTEM

Add an additional chamber to extend your sorting and compaction station!

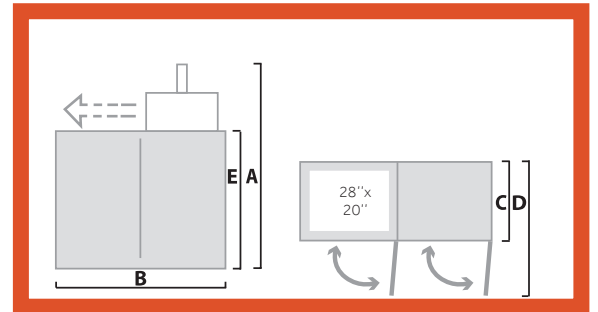
### BALE TROLLEY INCLUDED

The 5070 is always delivered with a bale trolley for easy baling and internal transportation of the bale.

## DIMENSIONS & SPECIFICATIONS

DIMENSIONS				
A	B	C	D	E
71"	69"	29" (35")*	56"	48"

\*Including strap holders



TECHNICAL SPECIFICATIONS								
LOADING APERTURE	CYCLE TIME	PRESS FORCE	BALE SIZE	BALE WEIGHT	MACHINE WEIGHT	NOISE LEVEL	PROTECTION CLASS	OPERATING POWER
Width: 28" Height: 20"	36 secs	6,600 lbs	Width: 28" Depth: 20" Height: 28"	Cardboard: Up to 110 lbs Plastic: Up to 180 lbs	Total weight: 1185 lbs Press unit only: 352 lbs	< 70 db (A)	IP 55	Single phase 115 V, 60 Hz, 10 A

We reserve the right to make changes to specifications without prior notice. Bale/bag/bin weights are dependent upon material type.

### ORWAK NORTH AMERICA, INC.

9200 Globe Center Drive, Suite 130  
Morrisville  
NC 27560, USA  
Phone: +1-800-747-0449  
Email: info@orwakbalers.com

[ORWAKBALERS.COM](http://ORWAKBALERS.COM)

