

# ORWAK MULTI 5070-COMBI

MULTI

**THE ORWAK MULTI 5070-COMBI** is a baler and an in-bin compactor in the same machine. It is a versatile all-round solution that takes care of both the bagged mixed waste and your recyclable packaging material.



**50** KG  
BALE WEIGHT  
CARDBOARD

## Versatile



## Orwak benefits

### MORE PRODUCTIVE USE OF TIME

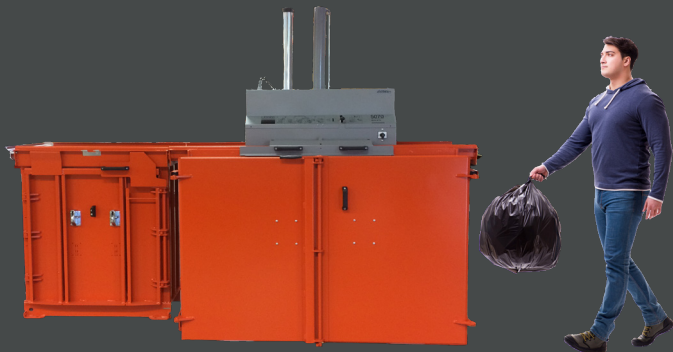
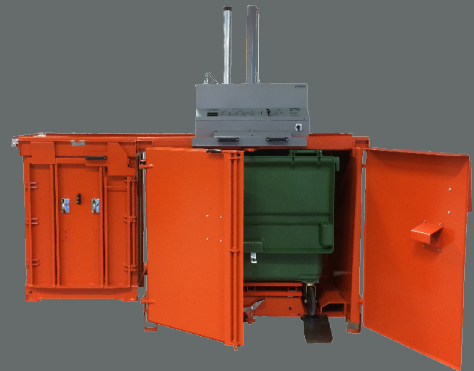
Less time spent on waste handling, more time for your core activities!

### MORE SPACE & ORDER

Our balers rapidly minimize the space the waste takes up, keeping aisles free and tidy.

### LESS COSTS, MORE VALUE

More compaction = less waste volume to transport. Fewer transports required results in lower transportation costs and reduced CO<sub>2</sub> emissions. Sorting at source yields a higher quality of waste material for recycling.

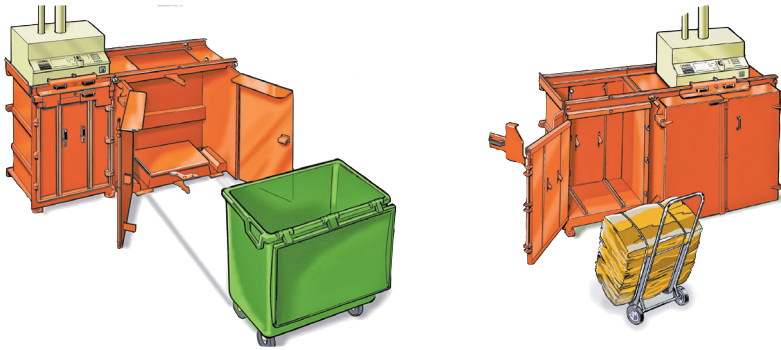


## Why Orwak Multi?

- + Sorting and compaction of several waste types at source
- + Top-loading of the material in open chambers
- + Total freedom to increase capacity by adding additional chambers

# ORWAK MULTI 5070-COMBI

All-round solution



## ORWAK MULTI 5070-COMBI IS OPTIMIZED FOR:

### PAPER

- + Paper sacks
- + Cardboard
- + Shredded paper

### PLASTIC FOIL

- + Shrink film
- + Plastic bags

### OTHER METALS

- + Steel straps

### OTHER PLASTICS

- + Plastic straps

### SEMI-DRY WASTE

- + Bagged general waste

## EXTENDABLE SYSTEM

Add an additional chamber to extend your sorting and compaction station!

## DESIGNED FOR STANDARD BINS

It is suitable for most standard wheeled bins of 660 litres.

## BALE TROLLEY

The 5070-COMBI is always delivered with a trolley for easy baling and internal transportation of the bale.

## DUAL FUNCTION UNIT

When you opt for the 5070-COMBI, you get a baler for recyclables and an in-bin compactor in the same machine!

## USER-FRIENDLY

The top-loading multi-chamber unit is simple to operate and convenient to feed with new material.

## VERSATILE

It takes care of both dry and semi-wet waste as well as baling cardboard boxes, paper and plastics.

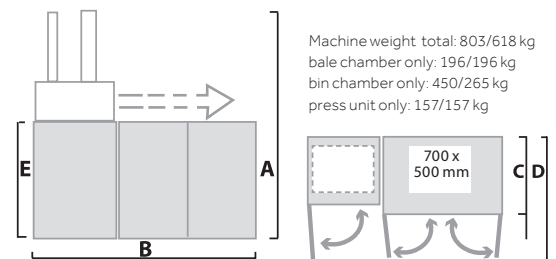
660 L/400L

## DIMENSIONS & SPECIFICATIONS

### DIMENSIONS

A	B	C	D	E
660 L/400L	660 L/400L	660 L/400L	660 L/400L	660 L/400L
2265/2315 mm	2550/1960 mm	920/808 mm 1011/899 mm*	1675/1733 mm	1325/1333 mm

\*Including strap holders



### TECHNICAL SPECIFICATIONS

LOADING APERTURE	CYCLE TIME	PRESS FORCE	BALE SIZE	BALE WEIGHT	NOISE LEVEL	PROTECTION CLASS	OPERATING POWER
Width: 700 mm Height: 500 mm	36 secs	3 ton, 30 kN	Width: 700 mm Depth: 500 mm Height: 700 mm	Cardboard: Up to 50 kg Plastic: Up to 80 kg	< 70 db (A)	IP 55	Single Phase 230 V, 50 Hz, 10 A

All dimensions and specifications are for one bale chamber and one bin chamber. For other combinations, please contact us. We reserve the right to make changes to specifications without prior notice. Bale/bag/bin weights are dependent upon material type.

Orwak AB  
Svetsaregatan 4  
S-576 33 Sävsjö  
SWEDEN  
Tel: +46-(0)382-157 00  
info@orwak.com, www.orwak.com

