

# ORWAK

## HORIZONTAL 600 AT

**HORIZONTAL**

### CENTRALIZED WASTE HANDLING

Our fully automated horizontal 60 ton baler meets the challenges by centralized waste handling in many businesses and organizations where huge volumes of recyclable paper-based and plastic wrapping are produced. We offer well-proven technology for special demands! The automatic tying and continuous baling allows multi-shift operation.



**Automatic  
solution**



**6-10** T/H

CAPACITY  
CARDBOARD

**600** KG

BALE WEIGHT (UP TO)  
CARDBOARD

## Optimal features

### WELL PROVEN TECHNOLOGY

based on more than 50 years of experience

### AUTO START

equipped with photocell start as standard

### HIGH SPEED

fast throughput of the material

### BALE COUNTER & OIL COOLER

### PROGRESSIVE CUTTING SYSTEM

### ADJUSTABLE BALE LENGTH

individual settings to meet your needs

### CHOICE BETWEEN VERTICAL & HORIZONTAL AUTOMATIC TYING

great versatility to bale different sorts of  
material



## Why Orwak Horizontal?

- + Effective large-scale waste handling
- + Improved internal and external logistics
- + Safe and comfortable working environment
- + Excellent control over the throughput
- + Increased income when delivering high-quality bales directly to the recycling industry.

### Smart fully automated solution

#### OPTIMIZED FOR:

##### PAPER

- + Paper sacks
- + Cardboard

##### PLASTIC

- + Shrink film
- + PET/ PEHD

##### METAL

- + Food cans
- + Paint cans

##### WOOD

- + Crates

#### CONTINUOUS FEEDING AND OUTPUT

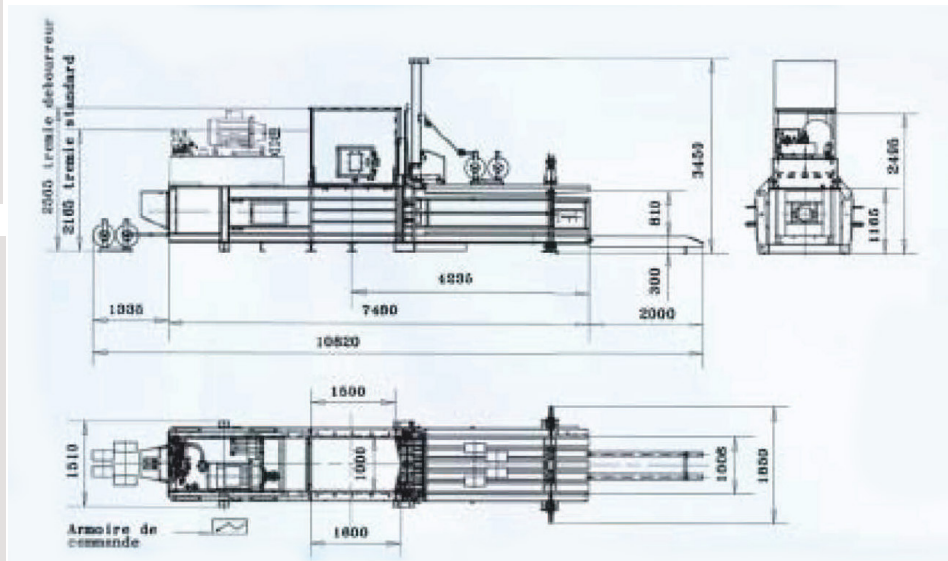
A completely automated waste management solution designed for continuous feed, automatic horizontal or vertical strapping system with adjustable wire links, which enables you to yield optimal output.

#### A VARIETY OF INFEED OPTIONS

To fit the conditions in your environment, our horizontal balers offer a wide choice of infeed systems: manual, by bin, air-transport and conveyor belt.

Our balers can also easily be equipped with shredders, bottle presses, rufflers, strippers and different types of hoppers.

#### 600 AT



## DIMENSIONS & SPECIFICATIONS

#### TECHNICAL DATA

MODEL	600 AT
Machine dimensions (LxWxH mm without bale exit)	8530x1850x3450
Feed opening (mm)	1550x1000
Infeed capacity (m³)	1.24
Press force (ton)	60
Motor (kW / Hp)	37.5/50
Surface pressure (kg/cm²)	7.7
Cycles per minute	3.5
Channel section (mm)	1000 x 800
Oil tank capacity (L)	1000
Total machine weight (kg)	13000
Production rate with load (m³/h)	160
Production accord. density (t/h)	6-10
Automatic binding	4 wires Ø 3.2
Bale size (mm)	1000x800x adjustable length
Bale weight cardboard (kg)	400-600 kg
<i>depends on bale length</i>	



#### OPTIONS

- + HORIZONTAL TYING
- + BIN LIFTER
- + CONVEYOR BELT
- + HEATING SYSTEM

*More special options on demand*



OPTION: CONVEYOR BELT



OPTION: BIN LIFTER

We reserve the right to make changes to specifications without prior notice. Bale weights are dependent upon material type.